

We use cookies to ensure you get the best experience on our website. By using this site, you agree to our cookie policy.

Hide

# nomis

official census and labour market statistics



## Shaugh Prior Parish

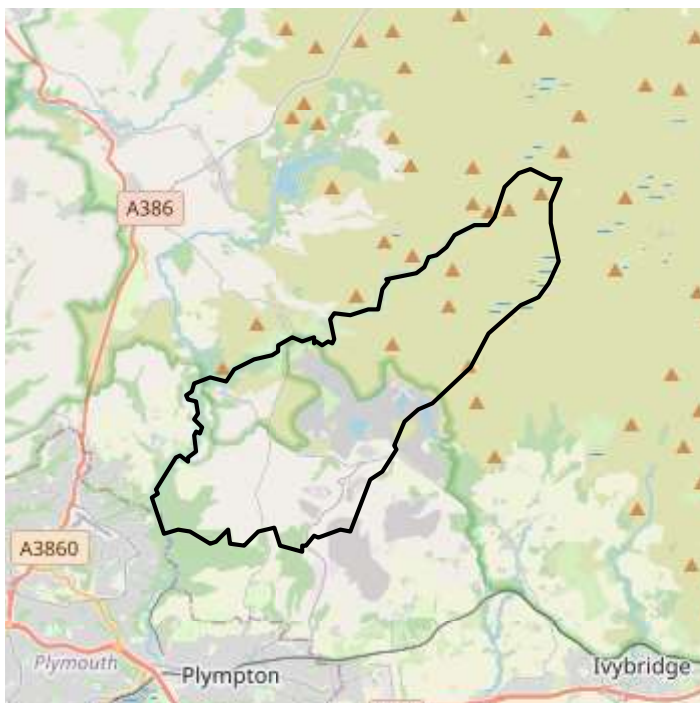
### Local Area Report

#### Summary

This report covers the characteristics of people and households in Shaugh Prior Parish in South Hams (GSS code E04003170). Figures are sourced from the 2011 Census key statistics.

There were 763 usual residents as at Census day 2011. Of these, 99.7% lived in households and 0.3% lived in communal establishments. The average (mean) age of residents was 46.9 years.

In total there were 349 household spaces. Of these, 335 (96%) had at least one usual resident and 14 (4%) had no usual residents.



#### Contents

##### Who we are

Information about the personal characteristics of people who usually live in an area including: Resident population, Age, Marital status, Living arrangements, Ethnic group, National identity, Country of birth, Passports held, Household language, Religion and Unpaid care.

**How we live**

The characteristics of the households we live in including: Number of households and type of accommodation, Whether owned or rented, Number of rooms and central heating, Number of cars, Household composition, Households with no adults in employment, Lone parent households and Communal establishments.

**What we do**

This section covers work-related topics including: Number of people in employment and unemployed, Qualifications and students, Hours worked, and the Industries and Occupations we work in.

**Definitions**

## Who we are

### Usual resident population

	Persons	
	Shaugh Prior Parish	
	count	%
All usual residents	763	100.0
Males	376	49.3
Females	387	50.7
Lives in a household	761	99.7
Lives in a communal establishment	2	0.3
Schoolchild or full-time student aged 4 and over at their non term-time address	10	-
Area (Hectares)	3,584.83	-
Density (number of persons per hectare)	0.2	-

- These figures are missing.

Source: ONS - 2011 Census (KS101EW)

In order to protect against disclosure of personal information, records have been swapped between different geographic areas. Some counts will be affected, particularly small counts at the lowest geographies

## Age structure

	Persons	
	Shaugh Prior Parish	
	count	%
All usual residents	763	100.0
Age 0 to 4	25	3.3
Age 5 to 7	23	3.0
Age 8 to 9	7	0.9
Age 10 to 14	31	4.1
Age 15	12	1.6
Age 16 to 17	22	2.9
Age 18 to 19	8	1.0
Age 20 to 24	38	5.0
Age 25 to 29	24	3.1
Age 30 to 44	120	15.7
Age 45 to 59	192	25.2
Age 60 to 64	73	9.6
Age 65 to 74	120	15.7
Age 75 to 84	55	7.2
Age 85 to 89	9	1.2
Age 90 and over	4	0.5
Mean Age	46.9	-
Median Age	51	-

- These figures are missing. Source: ONS - 2011 Census (KS102EW)

In order to protect against disclosure of personal information, records have been swapped between different geographic areas. Some counts will be affected, particularly small counts at the lowest geographies

## Marital and civil partnership status

	Persons	
	Shaugh Prior Parish	
	count	%
All usual residents aged 16+	665	100.0
Single (never married or never registered a same-sex civil partnership)	152	22.9
Married	392	58.9
In a registered same-sex civil partnership	0	0.0
Separated (but still legally married or still legally in a same-sex civil partnership)	12	1.8
Divorced or formerly in a same-sex civil partnership which is now legally dissolved	68	10.2
Widowed or surviving partner from a same-sex civil partnership	41	6.2

In order to protect against disclosure of personal information, records have been swapped between different geographic areas. Some counts will be affected, particularly small counts at the lowest geographies

Source: ONS - 2011 Census (KS103EW)

## Living arrangements

	Persons	
	Shaugh Prior Parish	
	count	%
All usual residents aged 16 and over in households	663	100.0
Living in a couple	424	64.0
Married or in a registered same-sex civil partnership	388	58.5
Cohabiting	36	5.4
Not living in a couple	239	36.0
Single (never married or never registered a same-sex civil partnership)	130	19.6
Married or in a registered same-sex civil partnership	4	0.6
Separated (but still legally married or still legally in a same-sex civil partnership)	10	1.5
Divorced or formerly in a same-sex civil partnership which is now legally dissolved	56	8.4
Widowed or surviving partner from a same-sex civil partnership	39	5.9

In order to protect against disclosure of personal information, records have been swapped between different geographic areas. Some counts will be affected, particularly small counts at the lowest geographies

Source: ONS - 2011 Census (KS104EW)

## Ethnic group

	Persons	
	Shaugh Prior Parish	
	count	%
All usual residents	763	100.0
White	755	99.0
English/Welsh/Scottish/Northern Irish/British	743	97.4
Irish	3	0.4
Gypsy or Irish Traveller	0	0.0
Other White	9	1.2
Mixed/multiple ethnic groups	6	0.8
White and Black Caribbean	2	0.3
White and Black African	2	0.3
White and Asian	2	0.3
Other Mixed	0	0.0
Asian/Asian British	2	0.3
Indian	0	0.0
Pakistani	0	0.0
Bangladeshi	0	0.0
Chinese	0	0.0
Other Asian	2	0.3
Black/African/Caribbean/Black British	0	0.0
African	0	0.0
Caribbean	0	0.0
Other Black	0	0.0
Other ethnic group	0	0.0
Arab	0	0.0
Any other ethnic group	0	0.0

In order to protect against disclosure of personal information, records have been swapped between different geographic areas. Some counts will be affected, particularly small counts at the lowest geographies

Source: ONS - 2011 Census (KS201EW)

## National identity

	Persons	
	Shaugh Prior Parish	
	count	%
All usual residents	763	100.0
English only identity	532	69.7
English and British only identity	72	9.4
Other English combined background identity	3	0.4
No English identity	156	20.4
Welsh only identity	7	0.9
Welsh and British only identity	0	0.0
Other Welsh combined background identity	0	0.0
No Welsh identity	756	99.1
Scottish only identity	3	0.4
Scottish and British only identity	1	0.1
Other Scottish combined background identity	0	0.0
No Scottish identity	759	99.5
Northern Irish only identity	2	0.3
Northern Irish and British only identity	0	0.0
Other Northern Irish combined background identity	0	0.0
No Northern Irish identity	761	99.7
British only identity	133	17.4
British and any other identity	74	9.7
No British identity	556	72.9
Cornish only identity	1	0.1
Cornish and British only identity	0	0.0
Cornish and at least one of English/Welsh/Scottish/Northern Irish identities (with or without British)	0	0.0
No Cornish identity	762	99.9
Irish only identity	2	0.3
Irish and British only identity	0	0.0
Irish and Northern Irish only identity	0	0.0
Irish, Northern Irish and British only identity	0	0.0
Irish and at least one of English/Welsh/Scottish identities (with or without British)	0	0.0
Irish, Northern Irish and at least one of English/Welsh/Scottish identities (with or without British)	0	0.0
No Irish identity	761	99.7
Other identities only	9	1.2
Other identities and at least one of English/Welsh/Scottish/Northern Irish/British only	4	0.5

In order to protect against disclosure of personal information, records have been swapped between different geographic areas. Some counts will be affected, particularly small counts at the lowest geographies

Source: ONS - 2011 Census (KS202EW)



		Shaugh Prior Parish	
		count	%
At least one of English/Welsh/Scottish/Northern Irish/British identities only		750	98.3
In order to protect against disclosure of personal information, records have been swapped between different geographic areas. Some counts will be affected, particularly small counts at the lowest geographies		Source: ONS - 2011 Census (KS202EW)	

## Country of birth

	Persons	
	Shaugh Prior Parish	
	count	%
All usual residents	763	100.0
United Kingdom	738	96.7
England	716	93.8
Northern Ireland	3	0.4
Scotland	9	1.2
Wales	10	1.3
United Kingdom not otherwise specified	0	0.0
Ireland	3	0.4
Other EU	6	0.8
Member countries in March 2001	4	0.5
Accession countries April 2001 to March 2011	2	0.3
Other countries	16	2.1

In order to protect against disclosure of personal information, records have been swapped between different geographic areas. Some counts will be affected, particularly small counts at the lowest geographies

Source: ONS - 2011 Census (KS204EW)

## Passports held

	Persons	
	Shaugh Prior Parish	
	count	%
All usual residents	763	100.0
No passport	169	22.1
United Kingdom	586	76.8
Republic of Ireland	2	0.3
Other Europe: EU countries	3	0.4
Other Europe: Non EU countries	1	0.1
Africa	0	0.0
Middle East and Asia	1	0.1
North America and the Caribbean	6	0.8
Central America	0	0.0
South America	0	0.0
Antarctica and Oceania	5	0.7
British Overseas Territories	0	0.0

In order to protect against disclosure of personal information, records have been swapped between different geographic areas. Some counts will be affected, particularly small counts at the lowest geographies

Source: ONS - 2011 Census (KS205EW)

## Household language

	Households	
	Shaugh Prior Parish	
	count	%
All households	335	100.0
All people aged 16 and over in household have English as a main language (English or Welsh in Wales)	331	98.8
At least one but not all people aged 16 and over in household have English as a main language (English or Welsh in Wales)	4	1.2
No people aged 16 and over in household but at least one person aged 3 to 15 has English as a main language (English or Welsh in Wales)	0	0.0
No people in household have English as a main language (English or Welsh in Wales)	0	0.0

In order to protect against disclosure of personal information, records have been swapped between different geographic areas. Some counts will be affected, particularly small counts at the lowest geographies

Source: ONS - 2011 Census (KS206EW)

## Religion

Persons		
Shaugh Prior Parish		
	count	%
All usual residents	763	100.0
Has religion	545	71.4
Christian	541	70.9
Buddhist	1	0.1
Hindu	0	0.0
Jewish	1	0.1
Muslim	2	0.3
Sikh	0	0.0
Other religion	0	0.0
No religion	160	21.0
Religion not stated	58	7.6

In order to protect against disclosure of personal information, records have been swapped between different geographic areas. Some counts will be affected, particularly small counts at the lowest geographies

Source: ONS - 2011 Census (KS209EW)

The voluntary question on religion in the 2011 Census was intended to capture people's religious affiliation and identification at the time of the Census irrespective of whether they practised or believed in that religion or how important it was in their lives. If a person had no religion then the first of a series of tick boxes could be selected. Care should be taken when using these data not to infer, or allow the inference by others, that the practice of a religion or specific religious activities that are expected of believers has been measured. Unlike other census questions where missing answers are imputed, this question was voluntary, and where no answer was provided the response is categorised as 'not stated'.

Due to an error in the processing of census data, the number of usual residents in the 'Religion not stated' category has been overestimated by a total of 62,000 for three local authorities: Camden, Islington and Tower Hamlets. More information from <http://www.ons.gov.uk/ons/guide-method/census/2011/census-data/census-products--issues-and-corrections/index.html>

## Health and provision of unpaid Care

	Persons	
	Shaugh Prior Parish	
	count	%
All usual residents	763	100.0
Day-to-day activities limited a lot	75	9.8
Day-to-day activities limited a little	95	12.5
Day-to-day activities not limited	593	77.7
Day-to-day activities limited a lot: Age 16 to 64	38	5.0
Day-to-day activities limited a little: Age 16 to 64	39	5.1
Day-to-day activities not limited: Age 16 to 64	400	52.4
Very good health	333	43.6
Good health	271	35.5
Fair health	109	14.3
Bad health	43	5.6
Very bad health	7	0.9
Provides no unpaid care	648	84.9
Provides 1 to 19 hours unpaid care a week	70	9.2
Provides 20 to 49 hours unpaid care a week	18	2.4
Provides 50 or more hours unpaid care a week	27	3.5

In order to protect against disclosure of personal information, records have been swapped between different geographic areas. Some counts will be affected, particularly small counts at the lowest geographies

Source: ONS - 2011 Census (KS301EW)

## How we live

### Dwellings, household spaces and accommodation type

	Household spaces, Dwellings	
	Shaugh Prior Parish	
	count	%
All dwelling types	349	100.0
Unshared dwelling	349	100.0
Shared dwelling: Two household spaces	0	0.0
Shared dwelling: Three or more household spaces	0	0.0
All household spaces	349	100.0
Household spaces with at least one usual resident	335	96.0
Household spaces with no usual residents	14	4.0
Whole house or bungalow: Detached	146	41.8
Whole house or bungalow: Semi-detached	86	24.6
Whole house or bungalow: Terraced (including end-terrace)	110	31.5
Flat, maisonette or apartment: Purpose-built block of flats or tenement	1	0.3
Flat, maisonette or apartment: Part of a converted or shared house (including bed-sits)	4	1.1
Flat, maisonette or apartment: In a commercial building	1	0.3
Caravan or other mobile or temporary structure	1	0.3

In order to protect against disclosure of personal information, records have been swapped between different geographic areas. Some counts will be affected, particularly small counts at the lowest geographies

Source: ONS - 2011 Census (KS401EW)

## Tenure

	Households	
	Shaugh Prior Parish	
	count	%
All households	335	100.0
Owned	257	76.7
Owned outright	140	41.8
Owned with a mortgage or loan	117	34.9
Shared ownership (part owned and part rented)	0	0.0
Social rented	32	9.6
Rented from council (Local Authority)	10	3.0
Other	22	6.6
Private rented	44	13.1
Private landlord or letting agency	38	11.3
Other	6	1.8
Living rent free	2	0.6

In order to protect against disclosure of personal information, records have been swapped between different geographic areas. Some counts will be affected, particularly small counts at the lowest geographies

Source: ONS - 2011 Census (KS402EW)



## Rooms, bedrooms and central heating

Households

Shaugh Prior  
Parish

	count	%
All households	335	100.0
Does not have central heating	21	6.3
Does have central heating	314	93.7
Occupancy rating (rooms) of -1 or less	6	1.8
Occupancy rating (bedrooms) of -1 or less	5	1.5
Average household size	2.3	-
Average number of rooms per household	6.1	-
Average number of bedrooms per household	3	-

- These figures are missing.

Source: ONS - 2011 Census (KS403EW)

In order to protect against disclosure of personal information, records have been swapped between different geographic areas. Some counts will be affected, particularly small counts at the lowest geographies

## Car or van availability

	Households	
	Shaugh Prior Parish	
	count	%
All households	335	100.0
No cars or vans in household	29	8.7
1 car or van in household	125	37.3
2 cars or vans in household	133	39.7
3 cars or vans in household	23	6.9
4 or more cars or vans in household	25	7.5
sum of all cars or vans in the area	578	-

- These figures are missing.

Source: ONS - 2011 Census (KS404EW)

In order to protect against disclosure of personal information, records have been swapped between different geographic areas. Some counts will be affected, particularly small counts at the lowest geographies

## Household composition

	Households	
	Shaugh Prior Parish	
	count	%
All households	335	100.0
One person household	96	28.7
Aged 65 and over	49	14.6
Other	47	14.0
One family household	214	63.9
All aged 65 and over	42	12.5
Married or same-sex civil partnership couple	138	41.2
No children	72	21.5
Dependent children	44	13.1
All children non-dependent	22	6.6
Cohabiting couple	14	4.2
No children	9	2.7
Dependent children	5	1.5
All children non-dependent	0	0.0
Lone parent	20	6.0
Dependent children	16	4.8
All children non-dependent	4	1.2
Other household types	25	7.5
With dependent children	9	2.7
All full-time students	0	0.0
All aged 65 and over	1	0.3
Other	15	4.5

In order to protect against disclosure of personal information, records have been swapped between different geographic areas. Some counts will be affected, particularly small counts at the lowest geographies

Source: ONS - 2011 Census (KS105EW)

## Adults not in employment and dependent children and persons with long-term health problems or disability for all households

	Households	
	Shaugh Prior Parish	
	count	%
All households	335	100.0
No adults in employment in household	132	39.4
With dependent children	9	2.7
No dependent children	123	36.7
Dependent children in household: All ages	74	22.1
Age 0 to 4	21	6.3
One person in household with a long-term health problem or disability	105	31.3
With dependent children	14	4.2
No dependent children	91	27.2

In order to protect against disclosure of personal information, records have been swapped between different geographic areas. Some counts will be affected, particularly small counts at the lowest geographies

Source: ONS - 2011 Census (KS106EW)

## Lone parent households with dependent children

	Households	
	Shaugh Prior Parish	
	count	%
All lone parent households with dependent children	16	100.0
Lone parent in part-time employment: Total	6	37.5
Lone parent in full-time employment: Total	3	18.8
Lone parent not in employment: Total	7	43.8
Male lone parent: Total	1	6.2
In part-time employment	0	0.0
In full-time employment	1	6.2
Not in employment	0	0.0
Female lone parent: Total	15	93.8
In part-time employment	6	37.5
In full-time employment	2	12.5
Not in employment	7	43.8

In order to protect against disclosure of personal information, records have been swapped between different geographic areas. Some counts will be affected, particularly small counts at the lowest geographies

Source: ONS - 2011 Census (KS107EW)

## Communal establishment residents

Communal establishments, Persons

Shaugh Prior  
Parish

	count	%
All communal establishments	1	-
All usual residents living in communal establishments	2	100.0
Medical and care establishment: NHS: General hospital	0	0.0
Medical and care establishment: NHS: Mental health hospital/unit (including secure units)	0	0.0
Medical and care establishment: NHS: Other hospital	0	0.0
Medical and care establishment: Local Authority: Children's home (including secure units)	0	0.0
Medical and care establishment: Local Authority: Care home or other home	0	0.0
Medical and care establishment: Registered Social Landlord/Housing Association	0	0.0
Medical and care establishment: Other: Care home with nursing	0	0.0
Medical and care establishment: Other: Care home without nursing	0	0.0
Medical and care establishment: Other: Children's home (including secure units)	0	0.0
Medical and care establishment: Other	0	0.0
Other establishments	2	100.0
Establishment not stated	0	0.0

- These figures are missing.

Source: ONS - 2011 Census (KS405EW)

In order to protect against disclosure of personal information, records have been swapped between different geographic areas. Some counts will be affected, particularly small counts at the lowest geographies

## What we do

### Economic activity

	Persons	
	Shaugh Prior Parish	
	count	%
All usual residents aged 16 to 74	597	100.0
Economically active	381	63.8
In employment	361	60.5
Employee: Part-time	97	16.2
Employee: Full-time	195	32.7
Self-employed	69	11.6
Unemployed	10	1.7
Full-time student	10	1.7
Economically Inactive	216	36.2
Retired	143	24.0
Student (including full-time students)	24	4.0
Looking after home or family	14	2.3
Long-term sick or disabled	29	4.9
Other	6	1.0
Unemployed: Age 16 to 24	4	0.7
Unemployed: Age 50 to 74	2	0.3
Unemployed: Never worked	2	0.3
Long-term unemployed	4	0.7

In order to protect against disclosure of personal information, records have been swapped between different geographic areas. Some counts will be affected, particularly small counts at the lowest geographies

Source: ONS - 2011 Census (KS601EW)

## Economic activity - males

Persons

Shaugh Prior  
Parish

	count	%
All usual residents aged 16 to 74	296	100.0
Economically active	198	66.9
In employment	190	64.2
Employee: Part-time	21	7.1
Employee: Full-time	121	40.9
Self-employed	48	16.2
Unemployed	4	1.4
Full-time student	4	1.4
Economically Inactive	98	33.1
Retired	70	23.6
Student (including full-time students)	15	5.1
Looking after home or family	2	0.7
Long-term sick or disabled	8	2.7
Other	3	1.0
Unemployed: Age 16 to 24	1	0.3
Unemployed: Age 50 to 74	1	0.3
Unemployed: Never worked	0	0.0
Long-term unemployed	3	1.0

In order to protect against disclosure of personal information, records have been swapped between different geographic areas. Some counts will be affected, particularly small counts at the lowest geographies

Source: ONS - 2011 Census (KS602EW)



## Economic activity - females

Persons

Shaugh Prior  
Parish

	count	%
All usual residents aged 16 to 74	301	100.0
Economically active	183	60.8
In employment	171	56.8
Employee: Part-time	76	25.2
Employee: Full-time	74	24.6
Self-employed	21	7.0
Unemployed	6	2.0
Full-time student	6	2.0
Economically Inactive	118	39.2
Retired	73	24.3
Student (including full-time students)	9	3.0
Looking after home or family	12	4.0
Long-term sick or disabled	21	7.0
Other	3	1.0
Unemployed: Age 16 to 24	3	1.0
Unemployed: Age 50 to 74	1	0.3
Unemployed: Never worked	2	0.7
Long-term unemployed	1	0.3

In order to protect against disclosure of personal information, records have been swapped between different geographic areas. Some counts will be affected, particularly small counts at the lowest geographies

Source: ONS - 2011 Census (KS603EW)

## Qualifications and students

	Persons	
	Shaugh Prior Parish	
	count	%
All usual residents aged 16 and over	665	100.0
No qualifications	164	24.7
Level 1 qualifications	85	12.8
Level 2 qualifications	90	13.5
Apprenticeship	55	8.3
Level 3 qualifications	69	10.4
Level 4 qualifications and above	177	26.6
Other qualifications	25	3.8
Schoolchildren and full-time students: Age 16 to 17	19	2.9
Schoolchildren and full-time students: Age 18 and over	14	2.1
Full-time students: Age 18 to 74: Economically active: In employment	5	0.8
Full-time students: Age 18 to 74: Economically active: Unemployed	0	0.0
Full-time students: Age 18 to 74: Economically inactive	8	1.2

In order to protect against disclosure of personal information, records have been swapped between different geographic areas. Some counts will be affected, particularly small counts at the lowest geographies

Source: ONS - 2011 Census (KS501EW)

## Hours worked

	Persons	
	Shaugh Prior Parish	
	count	%
All usual residents aged 16 to 74 in employment the week before the census	371	100.0
Part-time: 15 hours or less worked	40	10.8
Part-time: 16 to 30 hours worked	82	22.1
Full-time: 31 to 48 hours worked	186	50.1
Full-time: 49 or more hours worked	63	17.0
Males	194	52.3
Part-time: 15 hours or less worked	17	4.6
Part-time: 16 to 30 hours worked	14	3.8
Full-time: 31 to 48 hours worked	120	32.3
Full-time: 49 or more hours worked	43	11.6
Females	177	47.7
Part-time: 15 hours or less worked	23	6.2
Part-time: 16 to 30 hours worked	68	18.3
Full-time: 31 to 48 hours worked	66	17.8
Full-time: 49 or more hours worked	20	5.4

In order to protect against disclosure of personal information, records have been swapped between different geographic areas. Some counts will be affected, particularly small counts at the lowest geographies

Source: ONS - 2011 Census (KS604EW)

## Industry

	Persons	
	Shaugh Prior Parish	
	count	%
All usual residents aged 16 to 74 in employment the week before the census	371	100.0
A Agriculture, forestry and fishing	25	6.7
B Mining and quarrying	11	3.0
C Manufacturing	38	10.2
D Electricity, gas, steam and air conditioning supply	1	0.3
E Water supply; sewerage, waste management and remediation activities	3	0.8
F Construction	38	10.2
G Wholesale and retail trade; repair of motor vehicles and motor cycles	43	11.6
H Transport and storage	14	3.8
I Accommodation and food service activities	22	5.9
J Information and communication	9	2.4
K Financial and insurance activities	6	1.6
L Real estate activities	8	2.2
M Professional, scientific and technical activities	13	3.5
N Administrative and support service activities	15	4.0
O Public administration and defence; compulsory social security	15	4.0
P Education	34	9.2
Q Human health and social work activities	62	16.7
R, S, T, U Other	14	3.8

In order to protect against disclosure of personal information, records have been swapped between different geographic areas. Some counts will be affected, particularly small counts at the lowest geographies

Source: ONS - 2011 Census (KS605EW)

## Industry - males

	Persons	
	Shaugh Prior Parish	
	count	%
All usual residents aged 16 to 74 in employment the week before the census	194	100.0
A Agriculture, forestry and fishing	13	6.7
B Mining and quarrying	11	5.7
C Manufacturing	25	12.9
D Electricity, gas, steam and air conditioning supply	1	0.5
E Water supply; sewerage, waste management and remediation activities	2	1.0
F Construction	34	17.5
G Wholesale and retail trade; repair of motor vehicles and motor cycles	16	8.2
H Transport and storage	11	5.7
I Accommodation and food service activities	7	3.6
J Information and communication	6	3.1
K Financial and insurance activities	1	0.5
L Real estate activities	5	2.6
M Professional, scientific and technical activities	10	5.2
N Administrative and support service activities	10	5.2
O Public administration and defence; compulsory social security	8	4.1
P Education	8	4.1
Q Human health and social work activities	22	11.3
R, S, T, U Other	4	2.1

In order to protect against disclosure of personal information, records have been swapped between different geographic areas. Some counts will be affected, particularly small counts at the lowest geographies

Source: ONS - 2011 Census (KS606EW)

## Industry - females

	Persons	
	Shaugh Prior Parish	
	count	%
All usual residents aged 16 to 74 in employment the week before the census	177	100.0
A Agriculture, forestry and fishing	12	6.8
B Mining and quarrying	0	0.0
C Manufacturing	13	7.3
D Electricity, gas, steam and air conditioning supply	0	0.0
E Water supply; sewerage, waste management and remediation activities	1	0.6
F Construction	4	2.3
G Wholesale and retail trade; repair of motor vehicles and motor cycles	27	15.3
H Transport and storage	3	1.7
I Accommodation and food service activities	15	8.5
J Information and communication	3	1.7
K Financial and insurance activities	5	2.8
L Real estate activities	3	1.7
M Professional, scientific and technical activities	3	1.7
N Administrative and support service activities	5	2.8
O Public administration and defence; compulsory social security	7	4.0
P Education	26	14.7
Q Human health and social work activities	40	22.6
R, S, T, U Other	10	5.6

In order to protect against disclosure of personal information, records have been swapped between different geographic areas. Some counts will be affected, particularly small counts at the lowest geographies

Source: ONS - 2011 Census (KS607EW)

## Occupation

	Persons	
	Shaugh Prior Parish	
	count	%
All usual residents aged 16 to 74 in employment the week before the census	371	100.0
1. Managers, directors and senior officials	46	12.4
2. Professional occupations	64	17.3
3. Associate professional and technical occupations	35	9.4
4. Administrative and secretarial occupations	28	7.5
5. Skilled trades occupations	67	18.1
6. Caring, leisure and other service occupations	42	11.3
7. Sales and customer service occupations	20	5.4
8. Process plant and machine operatives	34	9.2
9. Elementary occupations	35	9.4

In order to protect against disclosure of personal information, records have been swapped between different geographic areas. Some counts will be affected, particularly small counts at the lowest geographies

Source: ONS - 2011 Census (KS608EW)

## Occupation - males

	Persons	
	Shaugh Prior Parish	
	count	%
All usual residents aged 16 to 74 in employment the week before the census	194	100.0
1. Managers, directors and senior officials	25	12.9
2. Professional occupations	33	17.0
3. Associate professional and technical occupations	23	11.9
4. Administrative and secretarial occupations	2	1.0
5. Skilled trades occupations	60	30.9
6. Caring, leisure and other service occupations	8	4.1
7. Sales and customer service occupations	3	1.5
8. Process plant and machine operatives	25	12.9
9. Elementary occupations	15	7.7

In order to protect against disclosure of personal information, records have been swapped between different geographic areas. Some counts will be affected, particularly small counts at the lowest geographies

Source: ONS - 2011 Census (KS609EW)



## Occupation - females

	Persons	
	Shaugh Prior Parish	
	count	%
All usual residents aged 16 to 74 in employment the week before the census	177	100.0
1. Managers, directors and senior officials	21	11.9
2. Professional occupations	31	17.5
3. Associate professional and technical occupations	12	6.8
4. Administrative and secretarial occupations	26	14.7
5. Skilled trades occupations	7	4.0
6. Caring, leisure and other service occupations	34	19.2
7. Sales and customer service occupations	17	9.6
8. Process plant and machine operatives	9	5.1
9. Elementary occupations	20	11.3

In order to protect against disclosure of personal information, records have been swapped between different geographic areas. Some counts will be affected, particularly small counts at the lowest geographies

Source: ONS - 2011 Census (KS610EW)

	Persons	
	Shaugh Prior Parish	
	count	%
All usual residents aged 16 to 74	597	100.0
1. Higher managerial, administrative and professional occupations	70	11.7
1.1 Large employers and higher managerial and administrative occupations	19	3.2
1.2 Higher professional occupations	51	8.5
2. Lower managerial, administrative and professional occupations	111	18.6
3. Intermediate occupations	83	13.9
4. Small employers and own account workers	87	14.6
5. Lower supervisory and technical occupations	51	8.5
6. Semi-routine occupations	83	13.9
7. Routine occupations	61	10.2
8. Never worked and long-term unemployed	19	3.2
L14.1 Never worked	15	2.5
L14.2 Long-term unemployed	4	0.7
Not classified	32	5.4
L15 Full-time students	32	5.4
L17 Not classifiable for other reasons	0	0.0

In order to protect against disclosure of personal information, records have been swapped between different geographic areas. Some counts will be affected, particularly small counts at the lowest geographies

Source: ONS - 2011 Census (KS611EW)

## NS-SeC - males

	Persons	
	Shaugh Prior Parish	
	count	%
All usual residents aged 16 to 74	296	100.0
1. Higher managerial, administrative and professional occupations	49	16.6
1.1 Large employers and higher managerial and administrative occupations	14	4.7
1.2 Higher professional occupations	35	11.8
2. Lower managerial, administrative and professional occupations	52	17.6
3. Intermediate occupations	20	6.8
4. Small employers and own account workers	56	18.9
5. Lower supervisory and technical occupations	40	13.5
6. Semi-routine occupations	18	6.1
7. Routine occupations	35	11.8
8. Never worked and long-term unemployed	8	2.7
L14.1 Never worked	5	1.7
L14.2 Long-term unemployed	3	1.0
Not classified	18	6.1
L15 Full-time students	18	6.1
L17 Not classifiable for other reasons	0	0.0

In order to protect against disclosure of personal information, records have been swapped between different geographic areas. Some counts will be affected, particularly small counts at the lowest geographies

Source: ONS - 2011 Census (KS612EW)

## NS-SeC - females

	Persons	
	Shaugh Prior Parish	
	count	%
All usual residents aged 16 to 74	301	100.0
1. Higher managerial, administrative and professional occupations	21	7.0
1.1 Large employers and higher managerial and administrative occupations	5	1.7
1.2 Higher professional occupations	16	5.3
2. Lower managerial, administrative and professional occupations	59	19.6
3. Intermediate occupations	63	20.9
4. Small employers and own account workers	31	10.3
5. Lower supervisory and technical occupations	11	3.7
6. Semi-routine occupations	65	21.6
7. Routine occupations	26	8.6
8. Never worked and long-term unemployed	11	3.7
L14.1 Never worked	10	3.3
L14.2 Long-term unemployed	1	0.3
Not classified	14	4.7
L15 Full-time students	14	4.7
L17 Not classifiable for other reasons	0	0.0

In order to protect against disclosure of personal information, records have been swapped between different geographic areas. Some counts will be affected, particularly small counts at the lowest geographies

Source: ONS - 2011 Census (KS613EW)

## Definitions

---

### General information (applicable to all tables)

#### Statistical Disclosure Control

In order to protect against disclosure of personal information from the 2011 Census, there has been swapping of records in the Census database between different geographic areas, and so some counts will be affected. In the main, the greatest effects will be at the lowest geographies, since the record swapping is targeted towards those households with unusual characteristics in small areas.

More details on the ONS Census disclosure control strategy may be found on the Statistical Disclosure Control page on the ONS web site.

#### Contact details

<b>Name</b>	Census
<b>Telephone</b>	01329 444 972
<b>Web site</b>	<a href="http://www.ons.gov.uk/census">http://www.ons.gov.uk/census</a>
<b>Email</b>	<a href="mailto:census.customerservices@ons.gov.uk">census.customerservices@ons.gov.uk</a>

### Usual resident population

#### Sex

Sex is the classification of a person as either male or female.

#### Household

A household is defined as:

- one person living alone, or
- a group of people (not necessarily related) living at the same address who share cooking facilities and share a living room or sitting room or dining area.

This includes:

- sheltered accommodation units in an establishment where 50 per cent or more have their own kitchens (irrespective of whether there are other communal facilities), and
- all people living in caravans on any type of site that is their usual residence. This will include anyone who has no other usual residence elsewhere in the UK.

A household must contain at least one person whose place of usual residence is at the address. A group of short-term residents living together is not classified as a household, and neither is a group of people at an address where only visitors are staying.

#### Communal establishments

A communal establishment is an establishment providing managed residential accommodation. 'Managed' in this context means full-time or part-time supervision of the accommodation. Types of communal establishment include:

- Sheltered accommodation units where fewer than 50 per cent of the units in the establishment have their own cooking facilities, or similar accommodation where residents have their own rooms, but the main meal is provided. If half or more possess their own facilities for cooking (regardless of use) all units in the whole establishment are treated as separate households.
- Small hotels, guest houses, bed & breakfasts and inns and pubs with residential accommodation with room for 10 or more guests (excluding the owner/manager and his/her family).

- All accommodation provided solely for students (during term-time). This includes university-owned cluster flats, houses and apartments located within student villages, and similar accommodation owned by a private company and provided solely for students (University owned student houses that were difficult to identify and not clearly located with other student residences are treated as households, and houses rented to students by private landlords are also treated as households). Accommodation available only to students may include a small number of care-taking or maintenance staff, or academic staff.
- Accommodation available only to nurses. This includes cluster flats and similar accommodation, provided solely for nurses. Nurses' accommodation on a hospital site that does not also contain patients is treated as a separate communal establishment from the hospital (and not categorised as a hospital), so that nurses are treated as 'residents' and not 'resident staff' or 'patients'. This ensures consistency with similar nurses' accommodation not on a hospital site.

### **Schoolchildren and full-time students**

Schoolchildren and students in full-time education studying away from their family home are treated as usually resident at their term-time address. Basic demographic information only (name, sex, age, marital status and relationship) is collected at their non term-time address (their 'home' or 'vacation' address).

The information on families, household size and household composition for their non term-time address does not include them.

### **Area**

For area measurements, census statistics use Standard Area Measurements (SAM), created by ONS Geography for key geographies in the UK using standard methodologies. SAMs are land measurement figures defined by topographic boundaries (coastline and inland water) as at the end of 2011.

Area measurements are in hectares - the metric unit of area defined as 10,000 square metres or approximately 2.47 acres - there are 100 hectares in 1 km<sup>2</sup>.

Each area measurement used in census results is calculated by aggregating the SAM (measured to two decimal places) for each output area that has been best-fitted to each higher area.

## **Age structure**

### **Age**

Age is derived from the date of birth question and is a person's age at their last birthday, at 27 March 2011. Dates of birth that imply an age over 115 are treated as invalid and the person's age is imputed. Infants less than one year old are classified as 0 years of age.

## **Marital and civil partnership status**

### **Marital and civil partnership status**

Marital and civil partnership status classifies an individual according to their legal marital or registered same-sex civil partnership status as at census day, 27 March 2011.

This topic is the equivalent of the 2001 Census topic 'Marital status', but has undergone significant revision to take account of the Civil Partnership Act which came into force on 5 December 2005.

Marital and civil partnership states include:

- married/in a registered same-sex civil partnership,
- separated (but still legally married/in a registered same-sex civil partnership),
- divorced/formerly in a registered same-sex civil partnership, or
- widowed/surviving same-sex civil partner.

Although the term 'single' is widely used to cover people in a number of states such as divorced or separated it is not a legally recognised status and was not an option on the census questionnaire. In census results the term 'single' is used to refer only to someone who has never been married or in a registered same-sex civil partnership, which were options on the census questionnaire.

## Living arrangements

### Living arrangements

The living arrangements classification combines responses to the question on marital and civil partnership status with information about whether or not a person is living in a couple. This topic is only applicable to people in households. Living arrangements differs from marital and civil partnership status because cohabiting takes priority over other categories. For example, if a person is divorced and cohabiting, then in results for living arrangements they are classified as cohabiting.

## Ethnic group

### Ethnic group

Ethnic group classifies people according to their own perceived ethnic group and cultural background.

## Country of birth

### Country of birth

Country of birth is the country in which a person was born. The country of birth question included six tick box responses - one for each of the four parts of the UK, one for the Republic of Ireland, and one for 'Elsewhere'. Where a person ticked 'Elsewhere', they were asked to write in the current name of the country in which they were born. Responses are assigned codes based on the National Statistics Country Classification.

The grouping of countries within the classification is broadly regional, but takes into account the grouping of European Union (EU) countries. Countries in the EU are grouped into those that were EU members in March 2001, and those that became members (Accession countries) between April 2001 and March 2011 as part of the EU enlargement process.

## Household language

### Proficiency in English language

Proficiency in English language classifies people whose main language is not English (or not English or Welsh in Wales) according to their ability to speak English. A person is classified in one of the categories:

- can speak English very well,
- can speak English well,
- cannot speak English well, or
- cannot speak English.

## Religion

The voluntary question on religion in the 2011 Census was intended to capture people's religious affiliation and identification at the time of the Census irrespective of whether they practised or believed in that religion or how important it was in their lives. If a person had no religion then the first of a series of tick boxes could be selected. Care should be taken when using these data not to infer, or allow the inference by others, that the practice of a religion or specific religious activities that are expected of believers has been measured. Unlike other census questions where missing answers are imputed, this question was voluntary, and where no answer was provided the response is categorised as 'not stated'.

Due to an error in the processing of census data, the number of usual residents in the 'Religion not stated' category has been overestimated by a total of 62,000 for three local authorities: Camden, Islington and Tower Hamlets. More information from the Census issues and corrections page.

## Health and provision of unpaid Care

### Long-term health problem or disability

A long-term health problem or disability that limits a person's day-to-day activities, and has lasted, or is expected to last, at least 12 months. This includes problems that are related to old age. People were asked to assess whether their daily activities were limited a lot or a little by such a health problem, or whether their daily activities were not limited at all.

### **General Health**

General health is a self-assessment of a person's general state of health. People were asked to assess whether their health was very good, good, fair, bad or very bad. This assessment is not based on a person's health over any specified period of time.

### **Provision of unpaid care**

A person is a provider of unpaid care if they look after or give help or support to family members, friends, neighbours or others because of long-term physical or mental ill health or disability, or problems related to old age. This does not include any activities as part of paid employment. No distinction is made about whether any care that a person provides is within their own household or outside of the household, so no explicit link can be made about whether the care provided is for a person within the household who has poor general health or a long-term health problem or disability.

## **Dwellings, household spaces and accommodation type**

### **Number of household spaces in shared dwellings**

A household space is the accommodation used or available for use by an individual household. Household spaces are identified separately in census results as those with at least one usual resident, and those that do not have any usual residents.

A household space with no usual residents may still be used by short-term residents, visitors who were present on census night, or a combination of short-term residents and visitors.

Vacant household spaces, and household spaces that are used as second addresses, are also classified in census results as 'household spaces with no usual residents'.

A dwelling is shared if:

- the household spaces it contains have the accommodation type 'part of a converted or shared house',
- not all of the rooms (including kitchen, bathroom and toilet, if any) are behind a door that only that household can use, and
- there is at least one other such household space at the same address with which it can be combined to form the shared dwelling

## **Tenure**

### **Tenure**

Tenure provides information about whether a household rents or owns the accommodation that it occupies and, if rented, combines this with information about the type of landlord who owns or manages the accommodation.

## **Rooms, bedrooms and central heating**

### **Central heating (variable)**

A household's accommodation is classified as having central heating if it is present in some or all rooms (whether used or not). Central heating is classified by type, as shown in the classification table. Other central heating includes solar, liquefied petroleum gas (LPG) or other bottled gas.

This information is not available for household spaces with no usual residents.

## **Car or van availability**

### **Cars or vans in household**



This applies to the number of cars or vans that are owned, or available for use, by one or more members of a household. This includes company cars and vans that are available for private use. It does not include motorbikes or scooters, or any cars or vans belonging to visitors. The count of cars or vans in an area relates only to households. Cars or vans used by residents of communal establishments are not counted.

Households with 10 to 20 cars or vans are counted as having only 10. Responses indicating a number of cars or vans greater than 20 were treated as invalid and a value was imputed.

## Household composition

### Household composition

Household composition classifies households according to the relationships between the household members. Households consisting of one family and no other usual residents are classified according to the type of family (married, same-sex civil partnership or cohabiting couple family, or lone parent family) and the number of dependent children. Other households are classified by the number of people, the number of dependent children, or whether the household consists only of students or only of people aged 65 and over.

This definition is used in most results from the 2011 Census. In a small number of results an alternative classification is used that defines households by the age of the household members. It takes no account of the relationships between them. In results where this different definition is used it is clearly indicated.

## Economic activity

### Economic activity

Economic activity relates to whether or not a person who was working or looking for work in the week before census.

Rather than a simple indicator of whether or not someone was currently in employment, it provides a measure of whether or not a person was an active participant in the labour market.

A person's economic activity is derived from their 'Activity last week'. This is an indicator of their status or availability for employment - whether employed, actively looking for work, waiting to start a new job, available to start a new job, or their status if not employed or not seeking employment. Additional information included in the economic activity classification is also derived from information about the number of hours a person works and their type of employment - whether employed or self-employed.

The census concept of economic activity is compatible with the standard for economic status defined by the International Labour Organisation (ILO). It is one of a number of definitions used internationally to produce accurate and comparable statistics on employment, unemployment and economic status.

## Economic activity - males

### Economic activity

Economic activity relates to whether or not a person who was working or looking for work in the week before census.

Rather than a simple indicator of whether or not someone was currently in employment, it provides a measure of whether or not a person was an active participant in the labour market.

A person's economic activity is derived from their 'Activity last week'. This is an indicator of their status or availability for employment - whether employed, actively looking for work, waiting to start a new job, available to start a new job, or their status if not employed or not seeking employment. Additional information included in the economic activity classification is also derived from information about the number of hours a person works and their type of employment - whether employed or self-employed.

The census concept of economic activity is compatible with the standard for economic status defined by the International Labour Organisation (ILO). It is one of a number of definitions used internationally to produce accurate and comparable statistics on employment, unemployment and economic status.

## Economic activity - females

### Economic activity

Economic activity relates to whether or not a person who was working or looking for work in the week before census.

Rather than a simple indicator of whether or not someone was currently in employment, it provides a measure of whether or not a person was an active participant in the labour market.

A person's economic activity is derived from their 'Activity last week'. This is an indicator of their status or availability for employment - whether employed, actively looking for work, waiting to start a new job, available to start a new job, or their status if not employed or not seeking employment. Additional information included in the economic activity classification is also derived from information about the number of hours a person works and their type of employment - whether employed or self-employed.

The census concept of economic activity is compatible with the standard for economic status defined by the International Labour Organisation (ILO). It is one of a number of definitions used internationally to produce accurate and comparable statistics on employment, unemployment and economic status.

## Hours worked

### Hours worked

number of hours that a person in employment in the week before the census, worked in their main job. This includes paid and unpaid overtime.

## Industry

### Industry

The industry in which a person works relates to their main job, and is derived from information provided on the main activity of their employer or business. This is used to assign responses to an industry code based on the Standard Industrial Classification 2007.

## Industry - males

### Industry

The industry in which a person works relates to their main job, and is derived from information provided on the main activity of their employer or business. This is used to assign responses to an industry code based on the Standard Industrial Classification 2007.

## Industry - females

### Industry

The industry in which a person works relates to their main job, and is derived from information provided on the main activity of their employer or business. This is used to assign responses to an industry code based on the Standard Industrial Classification 2007.

## Occupation

### Occupation

A person's occupation relates to their main job and is derived from either their job title or details of the activities involved in their job. This is used to assign responses to an occupation code based on the Standard Occupational Classification 2010 (SOC2010).

### Occupation - Major group

'Major group' refers to the categories at the highest level of the hierarchy of occupations.

## Occupation - males

### Occupation

A person's occupation relates to their main job and is derived from either their job title or details of the activities involved in their job. This is used to assign responses to an occupation code based on the Standard Occupational Classification 2010 (SOC2010).

### Occupation - Major group

'Major group' refers to the categories at the highest level of the hierarchy of occupations.

## Occupation - females

### Occupation

A person's occupation relates to their main job and is derived from either their job title or details of the activities involved in their job. This is used to assign responses to an occupation code based on the Standard Occupational Classification 2010 (SOC2010).

### Occupation - Major group

'Major group' refers to the categories at the highest level of the hierarchy of occupations.

## NS-SeC

### NS-SeC

The National Statistics Socio-economic Classification (NS-SEC) provides an indication of socioeconomic position based on occupation. It is an Office for National Statistics standard classification. To assign a person to an NS-SEC category their occupation title is combined with information about their employment status, whether they are employed or self-employed, and whether or not they supervise other employees. Full-time students are recorded in the 'full-time students' category regardless of whether they are economically active or not.

The rebased version of NS-SEC used in census results uses occupation coded to SOC2010. More information about NS-SEC:

<http://ons.gov.uk/ons/guide-method/classifications/current-standard-classifications/soc2010/soc2010-volume-3-ns-sec--rebased-on-soc2010--user-manual/index.html>

In 2011 Census results, because the census did not ask a question about the number of employees at a person's workplace, the reduced method of deriving NS-SEC (which does not require this information) is used.

## NS-SeC - males

### NS-SeC

The National Statistics Socio-economic Classification (NS-SEC) provides an indication of socioeconomic position based on occupation. It is an Office for National Statistics standard classification. To assign a person to an NS-SEC category their occupation title is combined with information about their employment status, whether they are employed or self-employed, and whether or not they supervise other employees. Full-time students are recorded in the 'full-time students' category regardless of whether they are economically active or not.

The rebased version of NS-SEC used in census results uses occupation coded to SOC2010. More information about NS-SEC:

<http://ons.gov.uk/ons/guide-method/classifications/current-standard-classifications/soc2010/soc2010-volume-3-ns-sec--rebased-on-soc2010--user-manual/index.html>

In 2011 Census results, because the census did not ask a question about the number of employees at a person's workplace, the reduced method of deriving NS-SEC (which does not require this information) is used.

## NS-SeC - females

### NS-SeC

The National Statistics Socio-economic Classification (NS-SEC) provides an indication of socioeconomic position based on occupation. It is an Office for National Statistics standard classification. To assign a person to an NS-SEC category their occupation title is combined with information about their employment status, whether they are employed or self-employed, and whether or not they supervise other employees. Full-time students are recorded in the 'full-time students' category regardless of whether they are economically active or not.

The rebased version of NS-SEC used in census results uses occupation coded to SOC2010. More information about NS-SEC:

<http://ons.gov.uk/ons/guide-method/classifications/current-standard-classifications/soc2010/soc2010-volume-3-ns-sec--rebased-on-soc2010--user-manual/index.html>

In 2011 Census results, because the census did not ask a question about the number of employees at a person's workplace, the reduced method of deriving NS-SEC (which does not require this information) is used.